

\$1,764,900 - 12550 Celestine Way, Milton

MLS® #6901470

\$1,764,900

5 Bedroom, 5.50 Bathroom, 6,334 sqft

Sqft Source: Builder

Residential on 1.00 Acres

Sweet Apple, Milton, GA

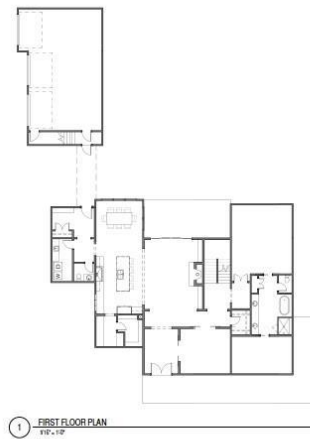
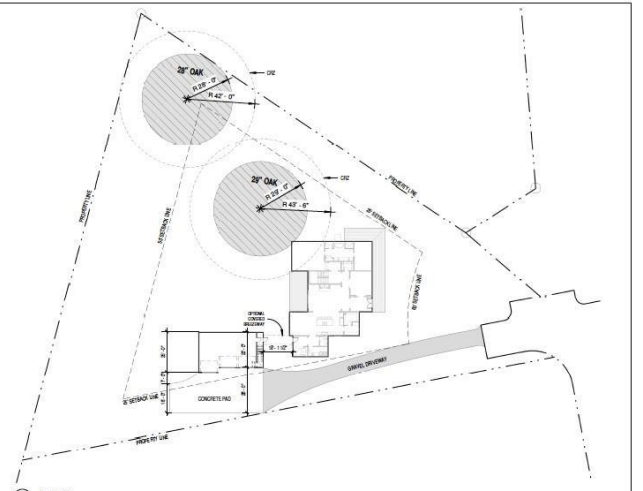
Custom Modern Farmhouse with Covered Front and Covered Rear porch. This 3 car Detached Garage Home on a Basement has a Covered Breezeway and is located at the End of the Street for Maximum Privacy and Views. The Beautiful home has a Gourmet Kitchen w/Thermador appliances w/a Large Chefs Island. Double Oven Walls units and a 48" range and a SCULLERY! There is also a Huge Mudroom and Large Pantry off the Kitchen and Sliding Doors in the Family room for abundant light. The Owners Suite is on the main level and the owners closet is 18x10! Open plan perfect for entertaining and has a Spacious Secondary bedrooms each w/ ensuite bath are on the 2nd level with a loft. The garage has a Finished Room Over the Garage (FROG) with a full bathroom. Rich Heritage and Nature is Your Amenity in Sweet Apple! Pond with Dock & Firepit. Bocce Court & Firepit in Community Area w/ Gardens. Protected Green space includes walking trails though out acres of Native Indigenous Plants & Trees. One of Georgia's 1st Solar Communities.

Built in 2021

Essential Information

MLS® # 6901470

Price \$1,764,900



Bedrooms	5
Bathrooms	5.50
Full Baths	5
Half Baths	1
Square Footage	6,334
SqFt Source	Builder
Acres	1.00
Year Built	2021
Type	Residential
Sub-Type	Contemporary, Other, Farmhouse
Status	Pending

Community Information

Address	12550 Celestine Way
Area	13 - Fulton North
Subdivision	Sweet Apple
City	Milton
County	Fulton
State	GA
Zip Code	30075

Amenities

Amenities	Homeowners Assoc, Walk to Schools, Walk to Shopping, Near Trails/Greenway, Park, Street Lights, Other, Community Dock, Fishing, Lake
Utilities	Cable Available, Electricity Available, Natural Gas Available, Underground Utilities, Water Available
Parking	Attached, Driveway, Garage, Auto Garage Door, Side/Rear Entry
# of Garages	2
View	Rural, Other
Pool	None

Interior

Interior	Beamed Ceilings, Disappearing Attic Stairs, Double Vanity, Entrance Foyer, High Ceilings 9 ft Upper, High Ceilings 10 ft Main, High Speed Internet, Low-Flow Fixtures, Walk-In Closet(s)
Appliances	Dishwasher, Disposal, Double Oven, Gas Range, Gas Water Heater, Microwave, Tankless Water Heater
Heating	Forced Air, Natural Gas, Zoned

Cooling	Central Air, Zoned
Fireplace	Yes
# of Fireplaces	1
Fireplaces	Family Room, Gas Log, Gas Starter, Outside
Stories	Three Or More

Exterior

Exterior Features	Private Backyard, Rain Gutters, Central Storage, Other
Lot Description	Back Yard, Front Yard, Landscaped, Wooded
Roof	Composition, Shingle, Metal
Construction	Cement Siding - Not Stucco, Other

School Information

Elementary	Crabapple Crossing
Middle	Northwestern
High	Milton

Listing Details

Listed By: Lenox Realty Partners



Listings on this website come from the FMLS IDX Compilation and may be held by brokerage firms other than the owner of this website. The listing brokerage is identified in any listing details. Information is deemed reliable but is not guaranteed. If you believe any FMLS listing contains material that infringes your copyrighted work, please [click here](#) to review our DMCA policy and learn how to submit a takedown request. © 2021 FMLS

For issues regarding this website (and/or listing search engine, as applicable) please contact Real Estate Webmasters - 250-753-9893

Listing information last updated on September 23rd, 2021 at 8:46am EDT

[click here](#)