

\$4,200,000 - 575 Lost River Bend, Milton

MLS® #6901888

\$4,200,000

6 Bedroom, 6.50 Bathroom, 8,760 sqft

Sqft Source: Other

Residential on 1.96 Acres

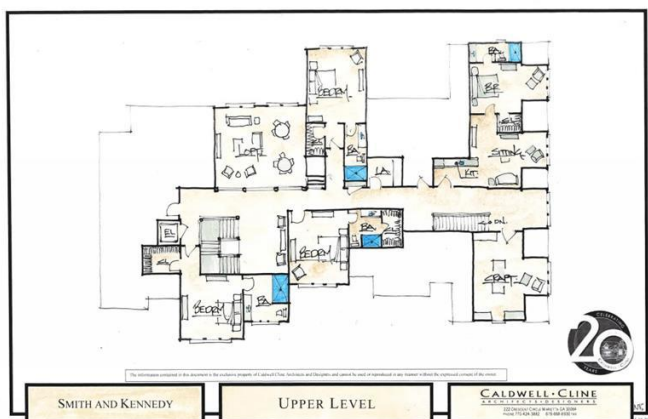
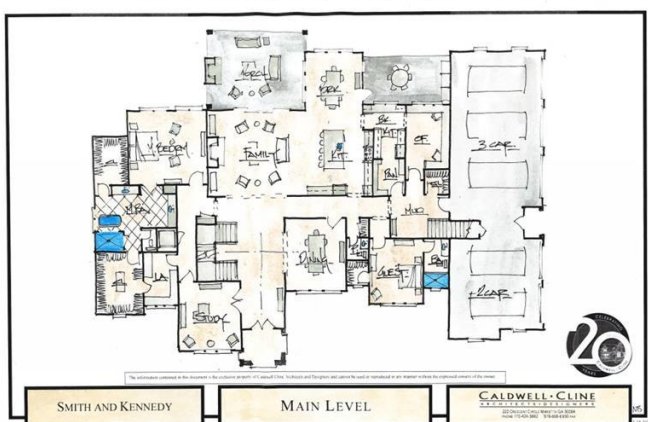
Rivers Edge Milton, Milton, GA

Stunning brick and stone estate custom built by Smith & Kennedy. Perfectly situated on 1.96 acres in exclusive gated Rivers Edge Milton! Elevator access to all three levels! Gorgeous designer kitchen with wolf & sub-zero appliances, oversized island, custom cabinetry and catering kitchen ideal for entertaining. Lovely family room overflowing with natural light, expansive outdoor living area with grilling porch and fireplace overlooking 16x60 salt water pebble tec pool with raised spa. Owners suite on main has a private laundry room, opulent bathroom with dual vanities, enormous walk-in shower, separate soaking tub, massive his & hers walk-in closet. Formal dining room accompanied with private study and additional home office. Secondary level offers three large en-suite bedrooms, nanny suite with full kitchen and sitting area, additional laundry room, loft and craft room. Future terrace level can be finished to accommodate guest bedroom, wine cellar, golf simulator, bar, billiard room, media room and craft room.

Built in 2021

Essential Information

MLS® #	6901888
Price	\$4,200,000
Bedrooms	6



Bathrooms	6.50
Full Baths	6
Half Baths	1
Square Footage	8,760
SqFt Source	Other
Acres	1.96
Year Built	2021
Type	Residential
Sub-Type	Craftsman, Traditional
Status	Active

Community Information

Address	575 Lost River Bend
Area	13 - Fulton North
Subdivision	Rivers Edge Milton
City	Milton
County	Fulton
State	GA
Zip Code	30004

Amenities

Amenities	Gated, Homeowners Assoc
Utilities	Cable Available, Electricity Available, Natural Gas Available, Phone Available, Water Available
Parking	Attached, Driveway, Garage, Auto Garage Door, Side/Rear Entry, Kitchen Level, Level Driveway
# of Garages	5
View	Other
Has Pool	Yes
Pool	Heated Pool, In Ground

Interior

Interior	Beamed Ceilings, Elevator, Entrance Foyer, High Ceilings 10 ft Main, High Ceilings 10 ft Upper, High Ceilings 10 ft Lower, High Speed Internet, His and Hers Closets, Walk-In Closet(s), Wet Bar
Appliances	Dishwasher, Disposal, Double Oven, Gas Cooktop, Microwave, Range Hood, Refrigerator
Heating	Forced Air, Natural Gas
Cooling	Ceiling Fan(s), Central Air

Fireplace	Yes
# of Fireplaces	2
Fireplaces	Family Room, Masonry, Outside
Stories	Two

Exterior

Exterior Features	Garden Area, Gas Grill, Private Backyard
Lot Description	Landscaped, Level, Private Backyard
Roof	Composition
Construction	Other

School Information

Elementary	Birmingham Falls
Middle	Northwestern
High	Milton

Listing Details

Listed By: Compass



Listings on this website come from the FMLS IDX Compilation and may be held by brokerage firms other than the owner of this website. The listing brokerage is identified in any listing details. Information is deemed reliable but is not guaranteed. If you believe any FMLS listing contains material that infringes your copyrighted work, please [click here](#) to review our DMCA policy and learn how to submit a takedown request. © 2021 FMLS

For issues regarding this website (and/or listing search engine, as applicable) please contact Real Estate Webmasters - 250-753-9893

Listing information last updated on September 27th, 2021 at 12:22pm EDT

[click here](#)